

**WFO Midland, Texas**

**MONTHLY REPORT OF HYDROLOGIC CONDITIONS**

REPORT FOR:

MONTH

YEAR

**October**

**2024**

SIGNATURE

J. DeBerry

In Charge of HSA

DATE

**November 15, 2024**

TO: Hydrometeorological Information Center, W/OH2  
 NOAA / National Weather Service  
 1325 East West Highway, Room 7230  
 Silver Spring, MD 20910-3283

*When no flooding occurs, include miscellaneous river conditions, such as significant rises, record low stages, ice conditions, snow cover, droughts, and hydrologic products issued (NWS Instruction 10-924)*

An X inside this box indicates that no river flooding occurred within this hydrologic service area.

October was uneventful hydrologically, characterized by few storm systems and dry fronts. No notable hydrologic activity was reported, and very little rainfall occurred.

Precipitation amounts from area ASOS's:

City	ASOS ID	October	September
Carlsbad, NM	KCNM	0.03"	0.09"
Fort Stockton	KFST	0.00"	1.69"
Midland Int'l	KMAF	0.00"	4.21"
Odessa	KODO	0.00"	M
Terrell County	K6R6	M	2.11"
Wink	KINK	0.08"	1.43"

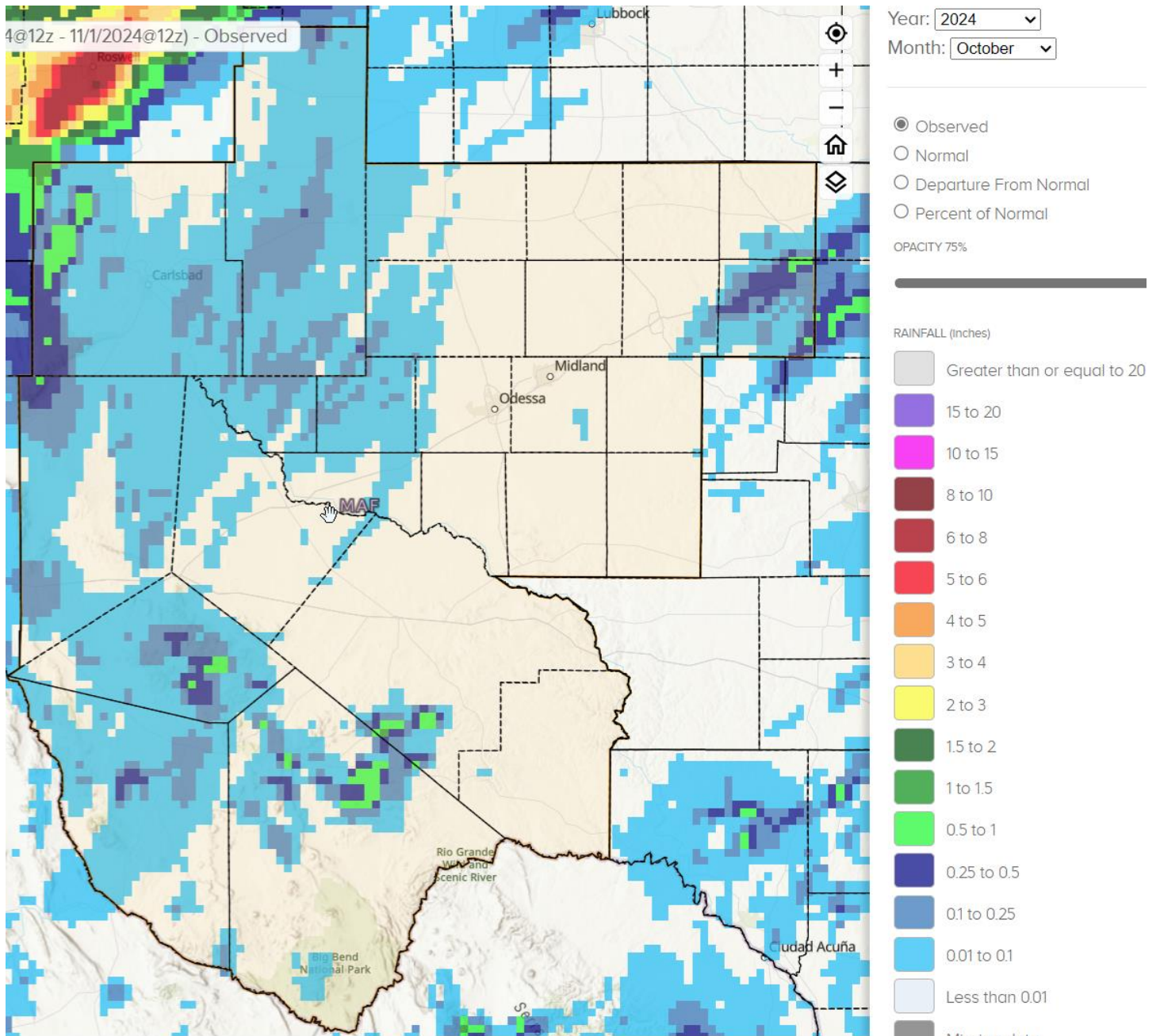
Precipitation amounts from area AWOS's:

City	AWOS ID	November	October
Alpine	KE38	0.03"	1.12"
Andrews County	KE11	M	5.05"
Artesia, NM	KATS	0.08"	1.29'
Big Spring	KBGP	0.02"	4.58"
Culberson County	KVHN	0.20"	0.17"
Gaines County	KGNC	0.00"	3.52"
Lajitas	KT89	0.00"	0.10"
Lamesa Municipal	KLUV	M	1.33"
Marfa	KMRF	M	M
Midland Airpark	KMDD	0.00"	1.09"
Pecos County	KPEQ	0.00"	2.12"
Presidio County	KPRS	0.00"	1.98"
Reagan County	KE41	0.00"	0.96"
Snyder	KSNK	0.00"	6.20"

Some other locations in the HSA that received notable amounts of precipitation for October were:

Hope, Eddy County	0.32"
The Bowl, Culberson County	0.41"
Dog Canyon, Culberson County	0.42"
Pine Springs, Culberson County	0.46"

81 locations reported rainfall for the month of October, for an HSA average of 0.05".



### October Precipitation

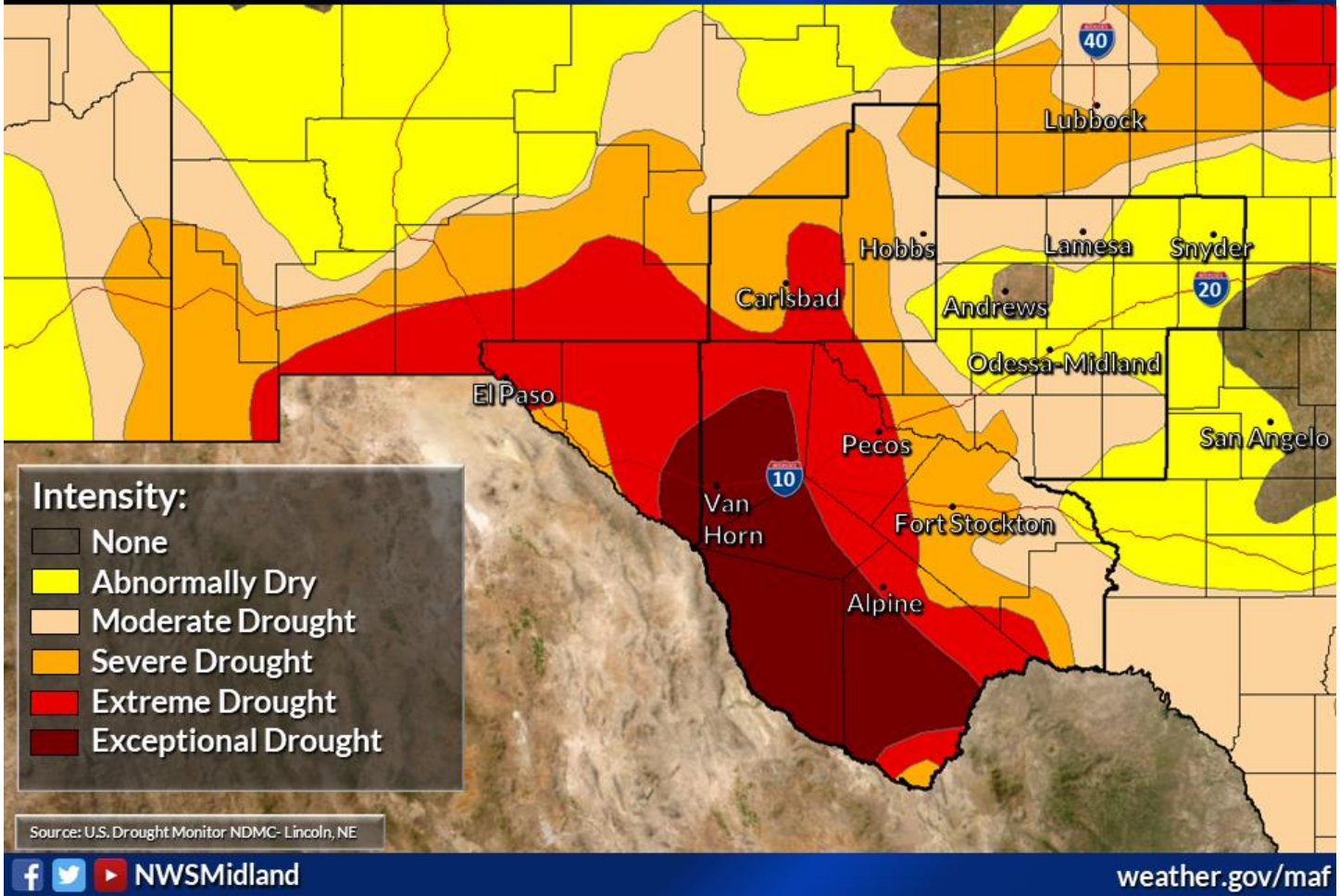
Normal October precipitation for Midland International Air and Space Port is 1.21". Total precipitation for the year was 10.33", or 1.87" below normal.

# Latest Drought Conditions

Valid 29 October 2024

Weather Forecast Office  
Midland/Odessa, TX

Issued October 31, 2024 12:30 PM CT



Reservoir levels across the HSA averaged 54.4% of conservation capacity as of November 1<sup>st</sup>:

Reservoir (County, State)	November 1 Conserv Cap (%)	October 1 Conserv Cap (%)
JB Thomas (Scurry, TX)	36.1	37.9
Colorado City (Mitchell, TX)	74.8	77.4
Champion Creek (Mitchell, TX)	49.9	51.4
Natural Dam Salt Lake (Howard, TX)	48.4	48.4
Moss Creek (Howard, TX)	77.0	73.0
Brantley (Eddy, NM)	59.0	38.0
Avalon (Eddy, NM)	51.0	54.0
Red Bluff (Reeves, TX)	38.6	38.6

## Non-Routine Products Issued for October:

Flash Flood Watches (FFA): 0  
Flash Flood Warnings (FFW): 0  
Flash Flood Statements (FFS): 0  
Flood Advisories/Statements (FLS): 3

Flood Warnings (FLW): 1

**Total Non-Routine Products Issued: 4**

**cc: email: COE ABQ, HIC, IBWC ELP, IBWC PRD, LCRA, NWS ABQ, NWS EPZ, NWS LBB,  
NWS MAF, NWS SJT, SRH, TAMU, TCEQ, USGS CNM, USGS SJT, WGRFC**